



PAN AM TOWER

201 SOUTH CAPITOL AVENUE


LAUTH

 JLL®

HIGHLIGHTS

Pan Am Tower is a 12-story building with a lower level and underground parking garage that sits at the corner of Capitol Avenue and Georgia Street across from the Indianapolis Convention Center. The property features:



Efficient floorplates with great window lines



Access to ample parking



Lobby and restroom updates



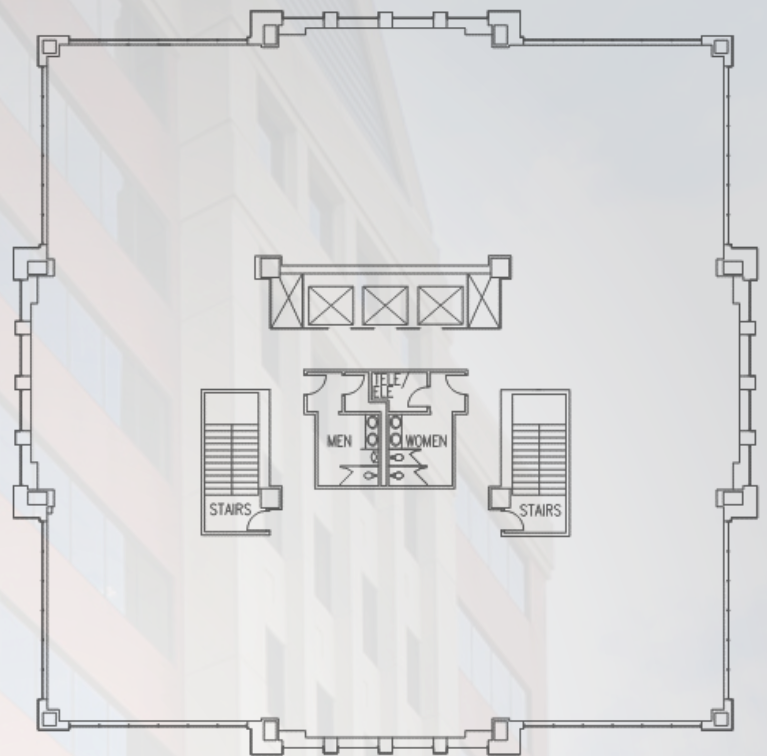
Retail on the first floor



Plans to add a new fitness center, conferencing space and upgraded building security in 2019



Redevelopment of Pan Am Plaza: Plans for two high profile Hilton branded hotels to be developed on the northeast and southeast sides of Pan Am Tower that will include +1,400 rooms, 50,000 sf meeting space, covered connections to the convention center, restaurants and more.



Sample Floorplate



INDIANA
CONVENTION
CENTER

WALKWAY TO CONVENTION CENTER

\$120M / 50,000 SF
2-STORY CONVENTION SPACE

814 ROOM - 38 STORY
HILTON HOTEL

600 ROOM
HILTON HOTEL

Rendering of future hotel developments



LOCATION

Sitting on the corner of Capitol Avenue and Georgia Street, directly across from the Convention Center, Pan Am Tower is arguably one of the best situated buildings in downtown Indianapolis. Pan Am is just one block from major hotels, restaurants, entertainment, shopping and more. A lot of buzz surrounds the building due to its placement on Georgia Street, also known as "Indy's Hometown Hangout." Georgia Street regularly hosts city sponsored events and special events such as Colts Tailgate Parties, the XLVI Superbowl, New Year's Eve celebrations, Food Truck Fridays, Happy Hours and more.

JOIN THE BUZZ ON GEORGIA STREET





PAN AM
TOWER

201 SOUTH CAPITOL AVENUE



KEVIN GILLIHAN
+1 317 810 7355
kevin.gillihan@am.jll.com

ADAM BRODERICK
+1 317 810 7178
adam.broderick@am.jll.com

